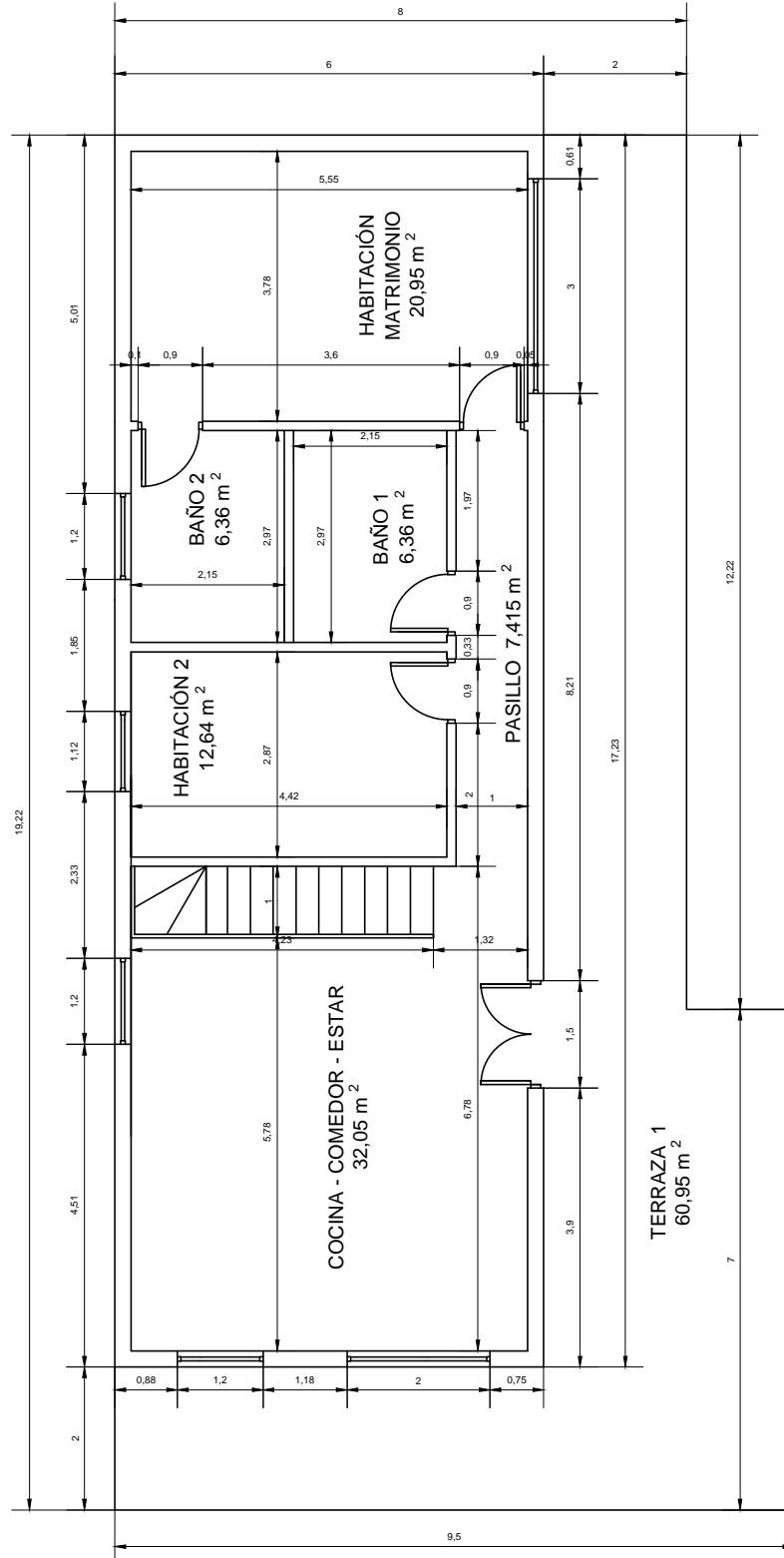


# MODELO MALLORCA

TOTAL  $144,225 \text{ m}^2 + 131,6 \text{ m}^2$  (Terraza) =  $275,825 \text{ m}^2$

Grosor paredes exteriores 225 mm  
 Grosor paredes interiores 130 mm

PLANTA BAJA  $103,35 \text{ m}^2 + 60,95 \text{ m}^2$  (Terraza) =  $164,3 \text{ m}^2$



PRIMERA PLANTA 40,875 m<sup>2</sup> + 70,65 m<sup>2</sup> (Terraza) = 111,525 m<sup>2</sup>

